

**RUSH
WITT &
WILSON**



**6 Withyham Road, Bexhill-On-Sea, East Sussex TN39 3BD
£565,000**

A three bedroom detached chalet bungalow in need of refurbishment, gas central heating system, double glazed windows and doors, conservatory, kitchen/breakfast room, lounge/diner, garage, off road parking, private front, side and rear gardens. Viewing Comes highly recommended by RWW sole agents Bexhill.



Entrance Porch

With door and window to the front elevation, double radiator, single radiator, built in storage cupboard.

Cloakroom

WC with low level flush, wall mounted wash hand basin, double radiator, obscure glass window overlooks the front elevation.

Living Room

18'6 x 13'3 (5.64m x 4.04m)

Window overlooks the rear southerly elevation, double radiator.

Dining Room

19'5 x 12'4 (5.92m x 3.76m)

Double radiator, fitted gas fire.

Kitchen/Breakfast Room

12'8 x 19'6 (3.86m x 5.94m)

Windows overlook the front and side elevations with door to side, fitted kitchen comprising a range of base and wall units with laminate straight edge worktops, double drainer sink unit with mixer tap, ceramic hob, fitted double oven with grill, plumbing for washing machine, space for tumble dryer, space for fridge/freezer, built in cupboards, single radiator.

Sunroom

23'3 x 13'9 (7.09m x 4.19m)

Windows and patio doors overlook the rear elevation onto the rear garden, double radiator.

Bedroom One

14'9 x 12'2 (4.50m x 3.71m)

Window to the side elevation, double radiator, built in wardrobe cupboards.

En-Suite

Comprising corner bath, wc with low level flush, pedestal wash hand basin, obscure glass window to the rear elevation, double radiator, tiled walls.

Bedroom Two

14'8 x 9'4 (4.47m x 2.84m)

Window to the front elevation, single radiator.

Bathroom

Suite comprising walk in shower with chrome controls and chrome showerhead, wc with low level flush, pedestal wash hand basin, double radiator, obscure glass window to the front elevation, tiled walls.

First Floor Landing

Window to the rear southerly elevation, door through to eaves storage space.

Bedroom Three

14'2 x 13'8 (4.32m x 4.17m)

Windows overlook the southerly elevation, single radiator, built in wardrobe cupboards, inset wash hand basin.

Outside**Front Garden**

Mainly designed with low maintenance in mind, with beautiful well kept hedging, in-out driveway with brick paving.

Side and Rear Gardens

Mainly laid to lawn with southerly aspect, all enclosed with fencing to all sides, mature shrubbery, patio area for alfresco dining, timber framed shed, gate giving side access.

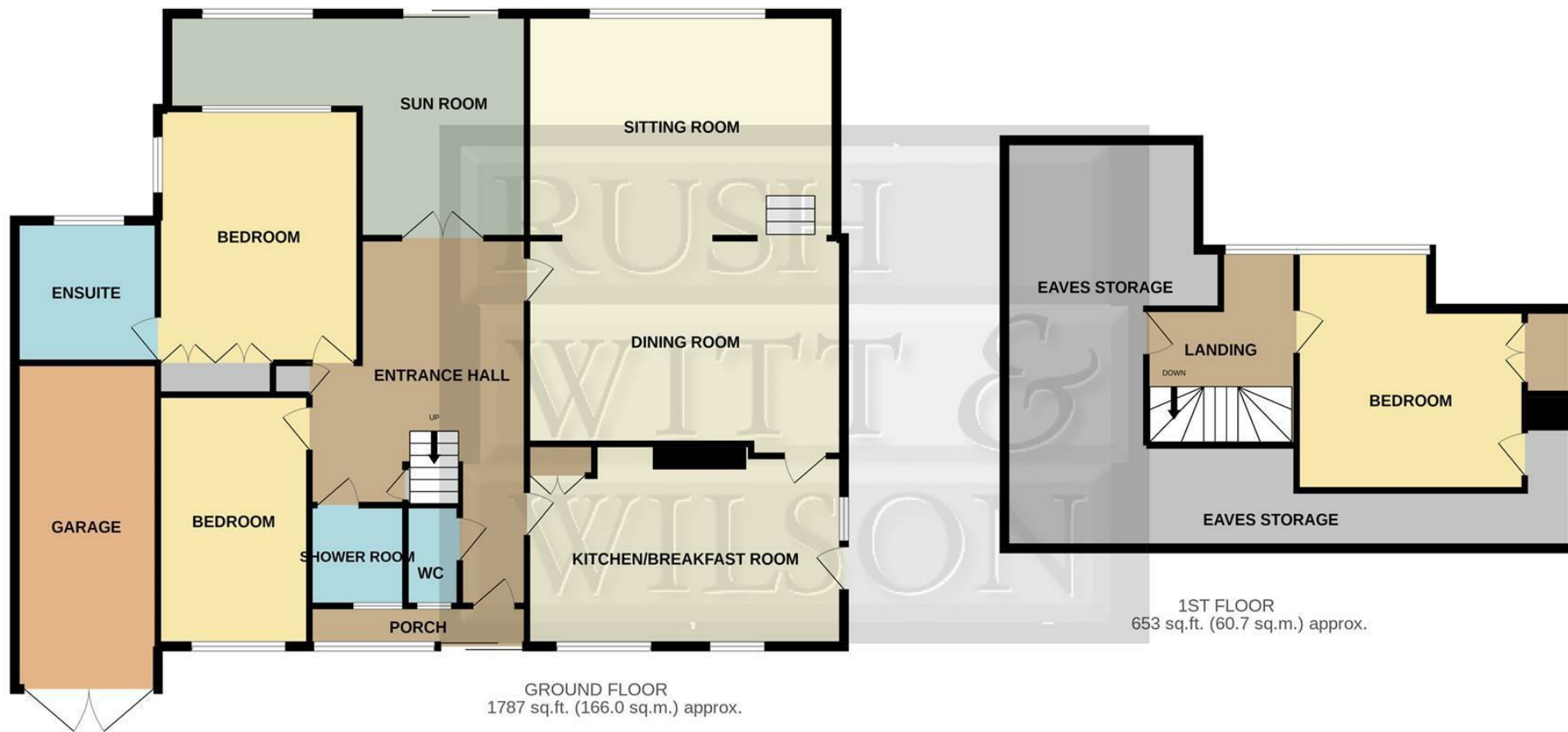
Single Garage

With double opening doors, power and light, window to the side elevation, work bench, gas and electric meters.

Agents Note

None of the services or appliances mentioned in these sale particulars have been tested. It should also be noted that measurements quoted are given for guidance only and are approximate and should not be relied upon for any other purpose.





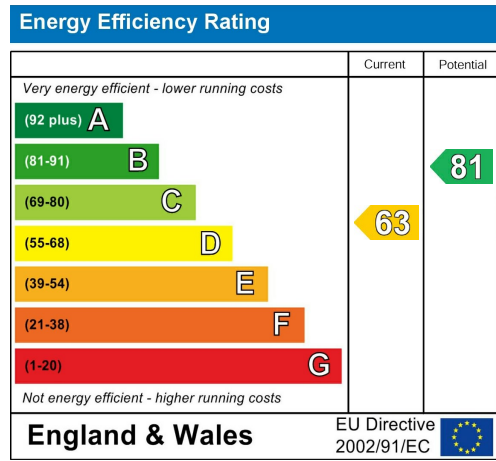
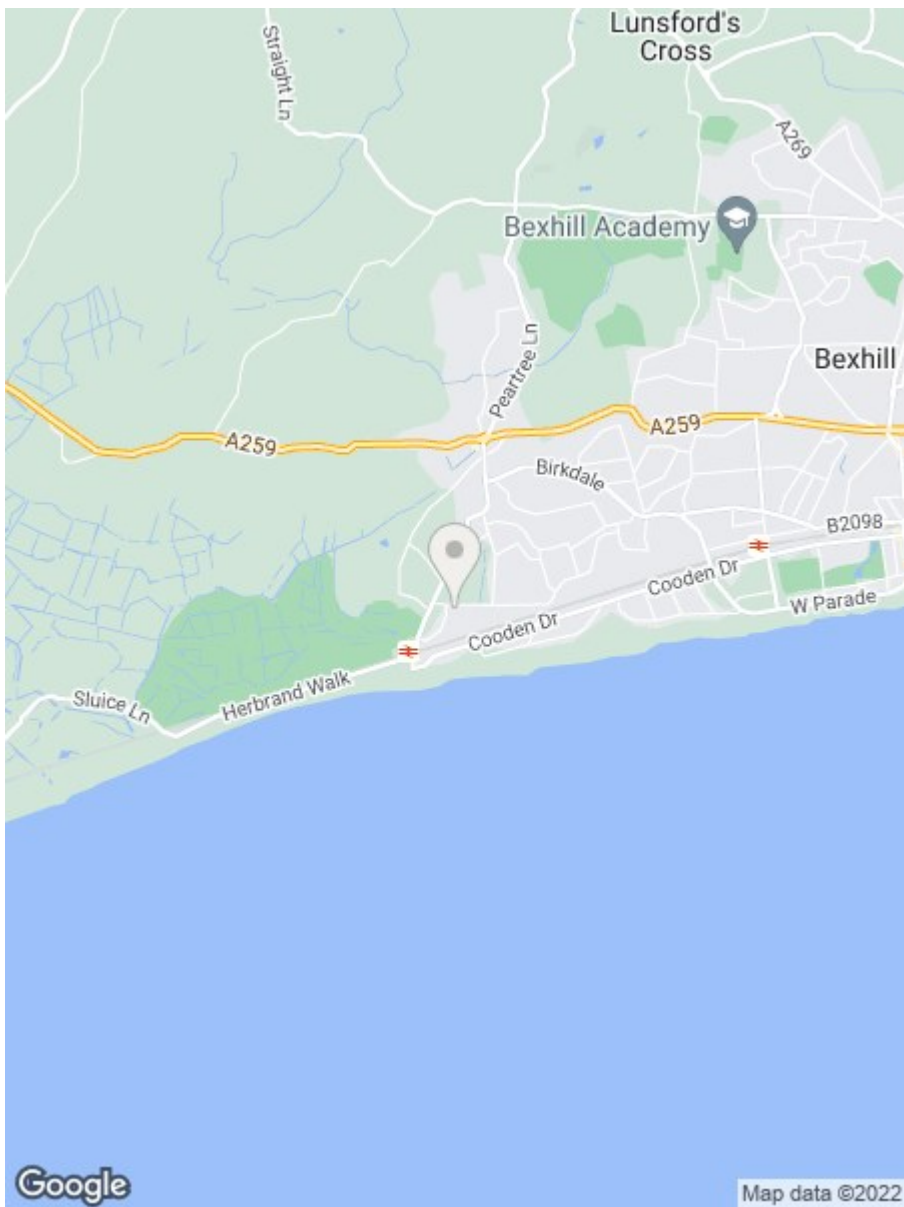
GROUND FLOOR
1787 sq.ft. (166.0 sq.m.) approx.

1ST FLOOR
653 sq.ft. (60.7 sq.m.) approx.

TOTAL FLOOR AREA : 2440 sq.ft. (226.7 sq.m.) approx.

Whilst every attempt has been made to ensure the accuracy of the floorplan contained here, measurements of doors, windows, rooms and any other items are approximate and no responsibility is taken for any error, omission or mis-statement. This plan is for illustrative purposes only and should be used as such by any prospective purchaser. The services, systems and appliances shown have not been tested and no guarantee as to their operability or efficiency can be given.

Made with Metropix ©2022



**RUSH
WITT &
WILSON**

Residential Estate Agents
Lettings & Property Management



3 Devonshire Road
Bexhill-on-Sea
East Sussex
TN40 1AH
Tel: 01424 225588
bexhill@rushwittwilson.co.uk
www.rushwittwilson.co.uk